

IFC Food Loss and Waste Reduction Advisory

Possible types of food losses:

- Losses during harvesting, postharvesting handling and processing
- Damage and losses during transportation
- Food destruction by pests
- Wrong storage (too hot, cold, dry, wet, etc.)
- Damage from cooling
- Wrong packaging materials and quantities
- Damage from climatic influences
- Expiry of shelf life

Key services to prevent losses:

- Assessment of in-house operations and supply chain to identify bottlenecks
- Propose KPI's for measuring success
- Development of workplan for improvement
- Conduct strategic review of operations and assess effectiveness of KPIs within six months
- Perform periodic review of workplan implementation to assess performance and quantify savings
- Use IFC Food Losses calculator to translate food loss into avoided GHGs

IFC has developed a Food Losses calculator that translates crop / food loss into avoided GHGs

- Uses country specific data from 117 developing countries and 34 crops
- Tool has a baseline for current losses and can calculate cost savings
- Tool was reviewed by FAO and Cranfield University

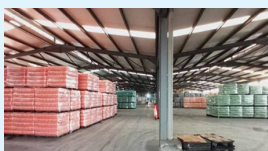
IFC Advisory and results

Twiga Foods Kenya: Food loss improvement project



- The food loss numbers are an estimate based on the average sales price of the products
- The three key bottlenecks leading to product waste are:
 - Manual operation of the reefer conditions for staging of bananas
 - Absence of proper control mechanisms at distribution locations
 - No show / no-pay by customers

Gaselia Beverages Cote d'Ivoire, Mali, Guinea: Food loss improvement project



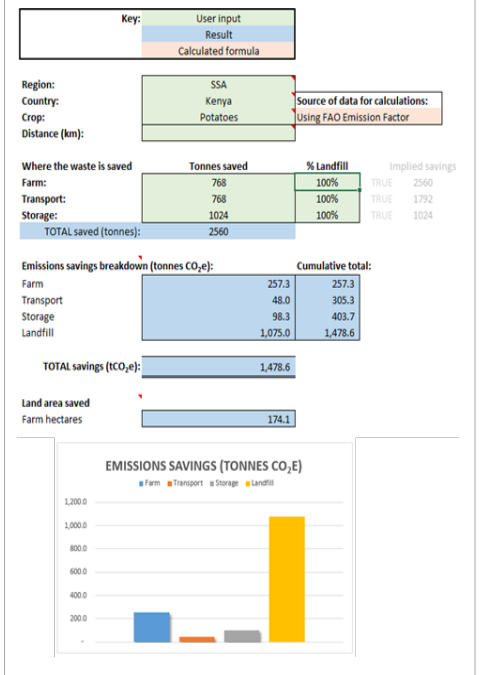
- The Food loss numbers are an estimate based on the average sales price of the products measured in hL – hectolitres
- The food loss improvements are attributed to improvements in stock rotation in the market and the First Expire, First Out management in the warehouse

NAFOODS GROUP JSC, Vietnam: Creating Markets for Passionfruit and other Vietnam's Fruits



- Realize the cost saving of US\$233,000 and reduce food loss of 53 tons to date (June 2021-June 2022, for one product)
- Expected to realize the cost saving of US\$484,000 and reduce the food loss of 110 tons within one year.

Food Losses calculator



International Finance Corporation (IFC), a member of the World Bank Group, is the largest global development institution focused on the private sector in developing countries. IFC provides investment and advisory services to companies throughout the agribusiness value chain.

Contacts:

Natia Mgeladze
Global Lead, IFC Food Safety Advisory
2121 Pennsylvania Ave NW, Washington DC 20433
T: +1 202 766 5118
nmgeladze@ifc.org